



OXFORD BIOMEDICAL RESEARCH
P.O. Box 522, Oxford MI 48371 • USA
USA: 800-692-4633 • Fax: 248-852-4466
www.oxfordbiomed.com

Product Specification

Rabbit Plasmin

Product # PL 38

Lot # RbPLM-1202

Molecular Weight: 85 KDa

Physical Appearance: colorless frozen solution

Solubility: >2 mg/mL

Spectrophotometric Data:

Ultraviolet: Absorbance (280nm) = 0.48 $0.1\% = 1.69$

Concentration: 0.28 mg/mL

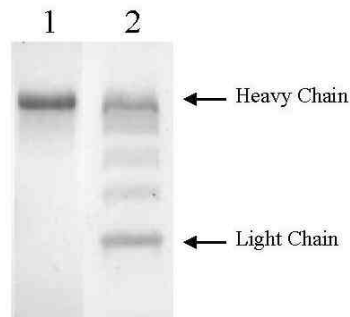
Considerations:

Storage Conditions: Store frozen at -70°C – stability > 1yr;

Avoid repeated freeze-thaw cycles

Buffer: 0.1 M HEPES; 0.1 M NaCl; pH 7.4

Other: Plasmin will undergo rapid autoproteolysis in the absence of protease inhibitors such as benzamidine, and should be used quickly after thawing before significant activity losses occur.



Rabbit Plasmin - 10 % SDS PAGE
1 Plasmin (Non Reduced)
2 Plasmin (Reduced)