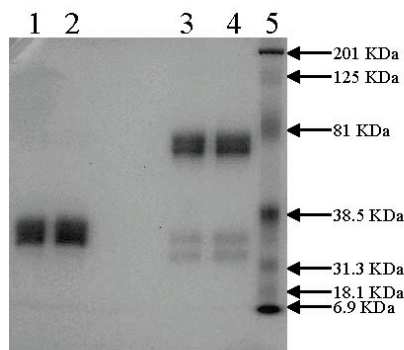


Product Specification Sheet

Rabbit anti-Protein
Serine/Threonine Phosphatase
2A/C
Product Number: PP22
Aliquot: 100 µL
Lot Number: pp22.10553
Storage: -20°C

DESCRIPTION:	Antibody corresponding to the C-terminal peptide of PP2A catalytic subunit (PP2A/C).
IMMUNOGEN:	Purified peptide conjugated to KLH. Sequence of peptide: NH ₂ -Pro-His-Val-Thr-Arg-Thr-Pro-Asp-Tyr-Phe-Leu-COOH.
PRESENTATION:	0.2 µm sterile filtered affinity purified antibody in PBS with 0.08% Sodium Azide.
STORAGE:	-20°C. Aliquot to minimize freezing and thawing.
REACTIVITY:	Human, Mouse, Rat, and Bovine
SPECIFICITY:	PP2A/C (36 kDa)
APPLICATIONS:	Immunoblotting – Recommended dilutions 1:500 – 1:1000 Immunochemistry – Recommended dilutions 1:500 – 1:1000



10% SDS-PAGE - GelCode Blue Stain
1 HTPA-TC-801 (3 ug) Reduced
2 HTPA-TC-803 (3 ug) Reduced
3 HTPA-TC-801 (3 ug) Non-reduced
4 HTPA-TC-803 (3 ug) Non-reduced
5 Prestained Standard