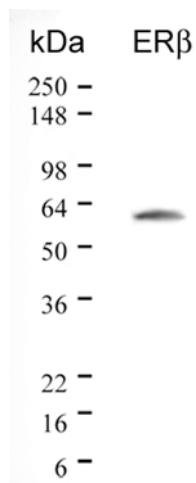


### Product Specification Sheet

Anti-Human Estrogen Receptor  $\beta$  (ER $\beta$ )  
Product Number: ER03  
Aliquot: 0.1 mg  
Lot Number: er03.typical lot  
Storage: -20° C

<b>IMMUNOGLOBULIN:</b>	Polyclonal Rabbit IgG
<b>IMMUNOGEN:</b>	Recombinant Human ER $\beta$
<b>PREDICTED SIZE:</b>	53 kDa
<b>CONCENTRATION:</b>	1.0 mg/mL
<b>SPECIFICITY:</b>	Human ER $\beta$ , not tested on other species.
<b>STORAGE:</b>	Store at -20° C. Avoid repeating freeze/thaw cycles, as it may result in loss of activity.
<b>PURITY:</b>	IgG
<b>WORKING DILUTION:</b>	Suggested concentration for Western blots is 1.0 $\mu$ g/mL. Not tested for IHC or ELISA.



**Figure 1:** Western blot of ER $\beta$  using ECL detection. Final concentration of the antibody is 1.0  $\mu$ g/mL.